

DETECTION OF LUPUS PLEURITIS: A TALE OF LIGHTS AND SHADOWS

MLO and Northern Illinois University (NIU), DeKalb, IL, are co-sponsors in offering continuing education units (CEUs) for this issue's article on **DETECTION OF LUPUS PLEURITIS: A TALE OF LIGHTS AND SHADOWS**. CEUs or contact hours are granted by the College of Health and Human Sciences at NIU, which has been approved as a provider of continuing education programs in the clinical laboratory sciences by the ASCLS P.A.C.E.[®] program (Provider No. 0001) and by the American Medical Technologists Institute for Education (Provider No. 121019; Registry No. 0061). Approval as a provider of continuing education programs has been granted by the state of Florida (Provider No. JP0000496), and for licensed clinical laboratory scientists and personnel in the state of California (Provider No. 351). Continuing education credits awarded for successful completion of this test are acceptable for the ASCP Board of Registry Continuing Competence Recognition Program. After reading the article on page 14, answer the following test questions and send your completed test form to NIU along with the nominal fee of \$20. Readers who pass the test successfully (scoring 70% or higher) will receive a certificate for 1 contact hour of P.A.C.E.[®] credit. Participants should allow four to six weeks for receipt of certificates.

The fee for this continuing education test is \$20.

The Cover Story, Clinical Issues, and Lab Management published in *MLO* are peer-reviewed.

Cover story objectives and the CE questions prepared by Masih Shokrani, PhD, MT(ASCP), Clinical Laboratory Sciences Program, College of Health and Human Sciences, Northern Illinois University, DeKalb, IL.

CE QUESTIONS

1. Systemic lupus erythematosus can virtually involve any organ in the body.

- a. TRUE b. FALSE

2. Which of the following statements about lupus erythematosus (LE) cell is correct?

- a. LE cells are neutrophilic phagocytes.
b. LE cells contain hematoxylin bodies.
c. In cytological preparations, LE cells must be distinguished from tart cells.
d. All of the above.

3. Which of the following statements about a tart cell is correct?

- a. A tart cell results from the phagocytosis of nuclear debris by macrophage.
b. Unlike a LE cell, a tart cell has non-homogenous or clumped appearance.
c. Tart cells are generally seen in effusion fluid.
d. All of the above.

4. In SLE patient, LE cells are seen in the following body fluids:

- a. synovial fluid
b. cerebrospinal fluid
c. pericardial fluid
d. All of the above.

5. An LE cell is characterized by homogenous nuclear material engulfed by a neutrophil, when examined by a Wright-Giemsa staining

- a. TRUE b. FALSE

6. The following diseases aid in the differential diagnosis of acute pleuritis:

- a. SLE or collagen disease
b. congestive heart failure
c. tuberculosis or pulmonary embolus
d. All of the above.

7. Severe chest pain, fever, dyspnea, and pleural effusion are among the symptoms of acute pleuritis.

- a. TRUE b. FALSE

8. The following tests have been used in the diagnosis of SLE:

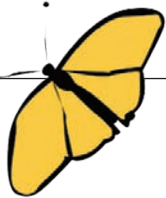
- a. serum antinuclear antibody tests
b. pleural-fluid cell count with the finding of LE cell
c. both a and b
d. neither a nor b

9. The immunological features that have been used in the past in the diagnosis of lupus pleuritis from other causes of effusion are

- a. reduced levels of complement.
b. presence of LE cells and ANA.
c. both a and b
d. neither a nor b

10. The presence of LE cell in an effusion is not associated with the presence of active lupus pleuritis

- a. TRUE b. FALSE



TEST ANSWER FORM

CE Test on DETECTION OF LUPUS PLEURITIS: A TALE OF LIGHTS AND SHADOWS November 2008

(This form may be photocopied; it is no longer valid for CEUs after May 31, 2010.)

Circles must be filled in, or test will not be graded.

Shade circles like this: ● Not like this: ⊗

P=Poor; E=Excellent

A B C D E

1. To what extent did the article focus on or clarify the objectives?

1. ○ ○

P ① ② ③ ④ ⑤ E

2. ○ ○ ○ ○

2. To what extent was the article well-organized and readable?

3. ○ ○ ○ ○

P ① ② ③ ④ ⑤ E

4. ○ ○ ○ ○

3. How will you use the CE units?

- state license
- recertification
- employment
- other

5. ○ ○

6. ○ ○ ○ ○

In order to receive CE licensure credits for California or Florida, your license number is required.

7. ○ ○

8. ○ ○ ○ ○

Please check applicable box:

- CA Lic. No. _____
- FL Lic. No. _____

9. ○ ○ ○ ○

10. ○ ○

11. ○ ○ ○ ○

FEE FOR THIS CE TEST IS \$20.

Make check payable to:
Northern Illinois University
Fee not refundable or transferable.

12. ○ ○ ○ ○

Send your check with this form to:
University Outreach Services
Northern Illinois University
DeKalb, IL 60115-2860
Telephone: 815-753-0031

13. ○ ○

14. ○ ○ ○ ○

15. ○ ○

PRINT CLEARLY

NAME _____

MAILING ADDRESS _____ HOME WORK

CITY _____ STATE _____ ZIP _____

INSTITUTION/FACILITY _____

WORK PHONE _____ E-MAIL ADDRESS _____

11. Which of the following features about "hematoxylin bodies" is true?
- a. They are engulfed by neutrophils, creating LE cells.
 - b. They stain blue with common cytological stains.
 - c. both a and b
 - d. neither a nor b

12. Chemistry-laboratory values that have been considered for lupus pleuritis include
- a. lactate dehydrogenase (LDH) enzyme.
 - b. fluid-to-serum LDH ratio.
 - c. glucose and total protein for pleural fluid.
 - d. All of the above.

13. Reduced number of neutrophils in pleural-fluid differential is typical of lupus pleuritis.
- a. TRUE
 - b. FALSE

14. Immunology-laboratory values that have been considered for lupus pleuritis are
- a. anti- native DNA (double stranded) antibodies.
 - b. staining pattern of serum ANA.
 - c. titer of pleural-fluid ANA.
 - d. All of the above.

15. New findings show that laboratory parameters are specific predictors of lupus pleuritis
- a. TRUE
 - b. FALSE

MLO's Continuing Education Test is now available online only. Beginning this year, both the CE test and a convenient payment feature will be available through the auspices of Northern Illinois University. Go to www.mlo-online.com/CE.aspx to print or to send electronically with payment.